



## Capital Building

8 New Union Square, Embassy Gardens, SW11 7AE

£1,150 Per Week



2



2



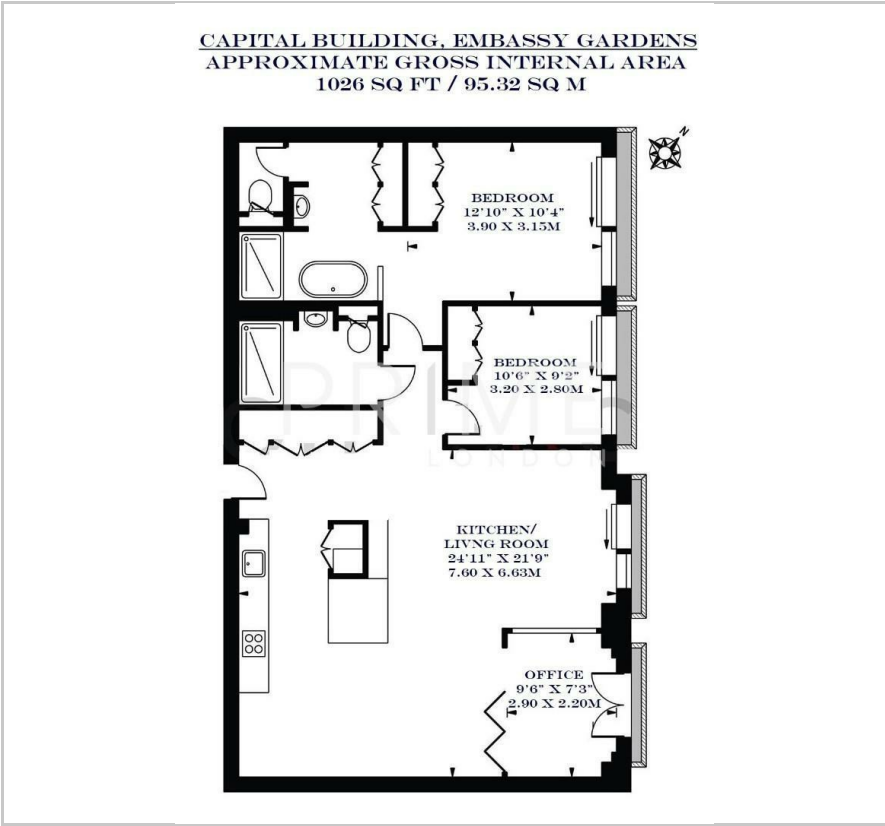
1



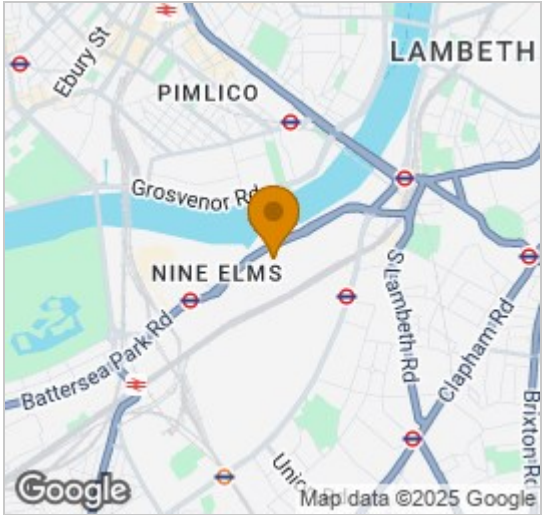
B



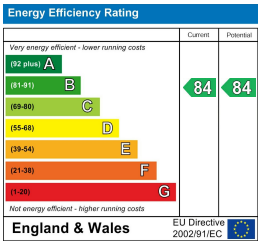
Floor Plan



Area Map



Energy Efficiency Graph



Viewing

By appointment. Contact us on 0207 928 6663 if you wish to arrange a viewing appointment for this property, or require further information.

- High specification apartment ■ 1,026 sq ft (95.32 sqm)
- Fully Furnished ■ Quiet Position
- Swimming Pool, Gym, Sauna, ■ 24 hour concierge service  
Cinema & Residents' Lounge



This high specification and fully furnished two bedroom apartment, set within the sought after Capital Building at Embassy Gardens, and is available to rent through Prime London.

The apartment offers an excellent living space of 1,026 sq ft (95.32 sqm) and comprises an open plan kitchen and living area, two well-proportioned double bedrooms with ample built in storage, an ensuite family bathroom and a second shower room.

Designed to the highest specification, the apartment boasts comfort cooling, wooden flooring, and floor to ceiling windows allowing an abundance of natural light, reminiscent of a Manhattan loft apartment.

Located on the banks of the Thames and near London's cultural South bank, residents not only enjoy a wealth of the Capital's finest attractions and amenities practically on their doorstep but also premium residents facilities including an exclusive private club and health spa.



These particulars, whilst believed to be accurate are set out as a general outline only for guidance and do not constitute any part of an offer or contract. Intending purchasers should not rely on them as statements of representation of fact, but must satisfy themselves by inspection or otherwise as to their accuracy. No person in this firms employment has the authority to make or give any representation or warranty in respect of the property.